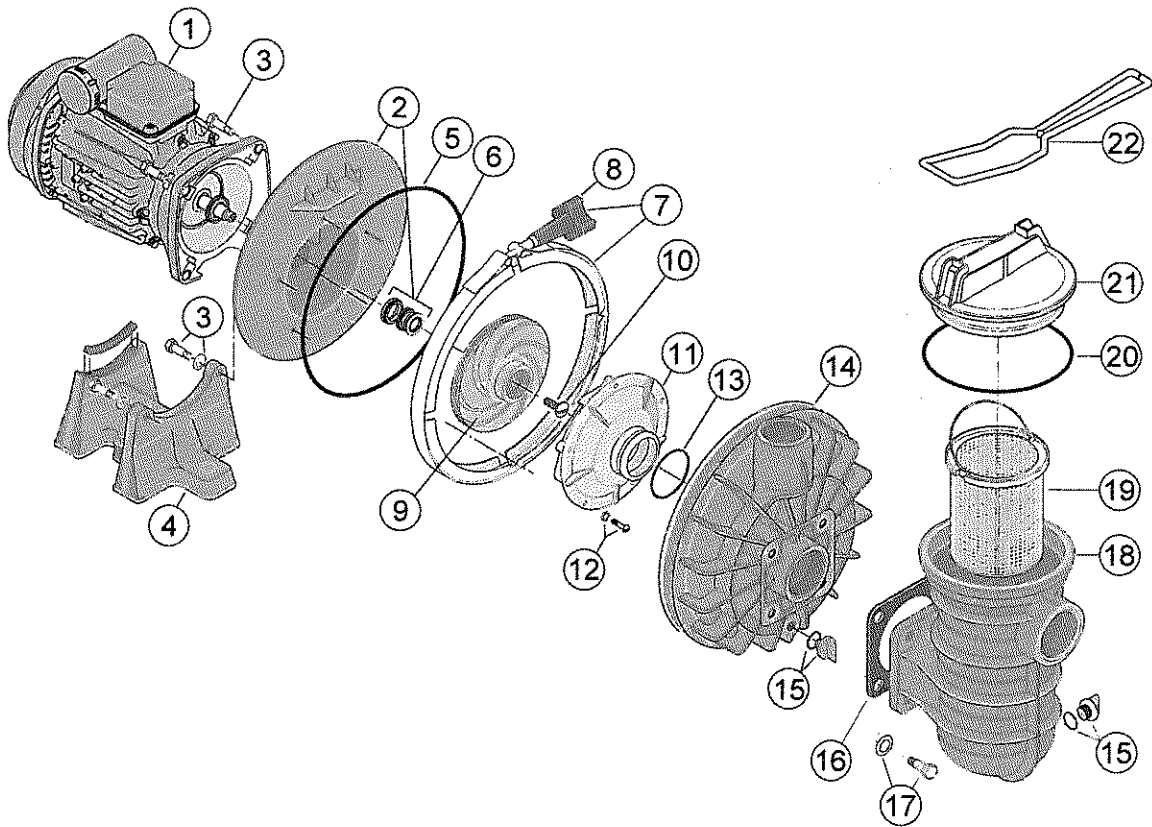


5P2R™



## 5P2R™

### Replacement Parts

No.	Part No.	Description	Part No.	Includes*
1**	RA-C1	Motor - Mono Phase 0,37KW		1
	RA-C3	Motor - Tri Phase 0,37KW		1
	RA-D1	Motor - Mono Phase 0,55KW		1
	RA-D3	Motor - Tri Phase 0,55KW		1
	RA-E1	Motor - Mono Phase 0,75KW		1
	RA-E3E2	Motor - Tri Phase 0,75KW		1
	RA-F1	Motor - Mono Phase 1,10KW		1
	RA-F3E2	Motor - Tri Phase 1,10KW		1
2	RC103193P	Seal Plate incl. Mechanical Seal		1
3	RU3074SS	Bolts		4
4	RC442P	Base (0,25KW -> 0,55KW)		1
	RC441P	Base (0,75KW -> 1,10KW)		1
5	R39006000	O-Ring		1
6	R173040100S	Mechanical Seal (for pumps manufactured after April 2009)		1
	RU10993SS	Mechanical Seal (for pumps manufactured before April 2009)		1
7	RC1937A	Clamp and knob Assembly		1
8	RWC3622	Clamp Knob		1
9	RC10592B1	Impeller 0,25KW Mono Phase		1
	RC10592B3	Impeller 0,25KW Tri Phase		1
	RC10592C1	Impeller 0,37KW Mono Phase		1
	RC10592C3	Impeller 0,37KW Tri Phase		1
	RC105138D1	Impeller 0,55KW Mono Phase		1
	RC105138D3	Impeller 0,55KW Tri Phase		1
	RC105137E1	Impeller 0,75KW Mono Phase		1
	RC105137E3	Impeller 0,75KW Tri Phase		1
	RC105137F1	Impeller 1,10KW Mono Phase		1
	RC105137F3	Impeller 1,10KW Tri Phase		1
10***	RC3012	Impeller Lock Screw		1
11	RC1216P	Diffuser (0,25KW -> 0,37KW)		1
	RC1200PA	Diffuser (0,55KW -> 1,10KW)		1
12	RU30542SS	Bolts & Washers		3
13	RU9226	O-Ring		1
14	RC17647P1W	Volute		1
15	RU178920P	Drain Plug		2
16	RC20123	Square Gasket		1
17	RU3064SS	Bolts & Washers		4
18	RC15353P1W	Strainer Pot		1
19	RC10833P	Basket		1
20	RU9229	O-Ring		1
21	RC3139P1	Lid		1
22	RU7911	Wrench for Lid		1
	RC25353P1W	Pre-Filter (Partn° 15, 18, 19, 20, 21)		
	PP1000	Seal Set (Partn° 5, 6, 13, 16, 20) For pumps with serialn° lower then 091060000 - Sealplate with heatsink		
	PP1000S	Seal Set (PN's 5, 6, 13, 16, 20) For pumps with serialn° larger then 091060000 - Sealplate without heatsink		

\* PART NUMBER INCLUDES REQUIRED QUANTITY PER PRODUCT

\*\* SEE MOTOR SHEET FOR MOTOR SPARE PARTS

\*\*\* IMPELLER SCREW ONLY ON TRI PHASE PUMPS